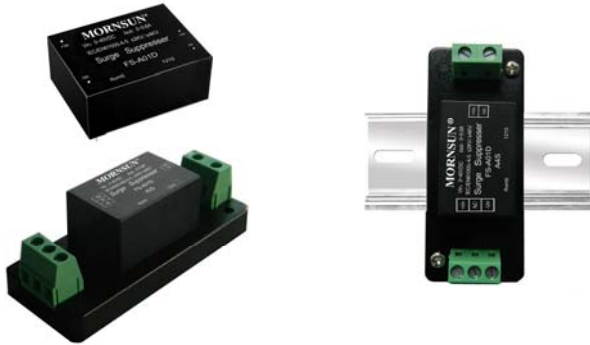


EMC Filter



RoHS

FEATURES

- Compact size
- Design to suppress the DC power surge to achieve primary protection
- The attenuation coefficient of frequency meet 30dB
- Cost-effective
- Low Temperature rise
- No reverse connect protection function
- Mounting: PCB mounting, chassis mounting with screw terminals, DIN-Rail mounting

FS-A01D put on to the input of DC/DC module can substantially improve the EMS performance of the module , FS-A01D put on to the output of DC/DC module can substantially reduce the ripple and noise of the module.

FS-A01D used with the MORNSUN DC/DC module, DC/DC module's max. Input voltage must less than FS-A01D's max. Voltage, DC/DC module's max. Input current must less than FS-A01D's nominal current.

Selection Guide

Model	Input Voltage Range (VDC)	Nominal Current (A)(max)
FS-A01D	0~40	0.6

Note: series with suffix "A2S" are chassis mounting, with suffix "A4S" are DIN-Rail mounting, for example FS-A01DA4S.

General Specifications

Item	Test Conditions	Min.	Typ.	Max.	Unit
Operating Temperature		-40	--	85	°C
Storage Temperature		-55	--	125	
Storage Humidity		5	--	95	%
Casing Temperature Rise	Input Current 0.6A	--	15	--	°C
D-C-R	Input - Output	--	600	--	mΩ

General Specifications

Casing Material	Black flame-retardant heat-proof epoxy resin (UL94-V0)				
Package Dimensions	Horizontal package	25.40x25.40x11.70 mm			
	A2S wiring package	76.00x31.50x21.20 mm			
	A4S rail package	76.00x31.50x25.80 mm			
Weight	Horizontal package/A2S wiring package/A4S rail package	15g/35g/55g(Typ)			

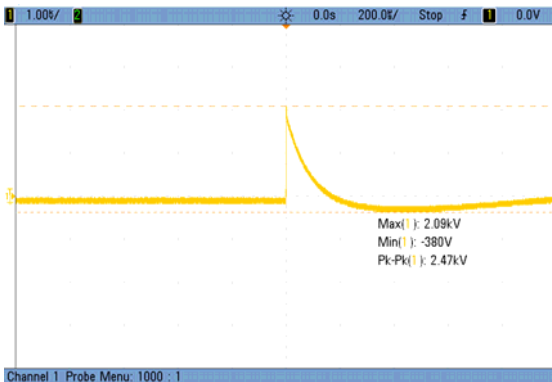
Surge Specifications

Item	Test Conditions	Min.	Typ.	Max.	Unit
Attenuation multiples	IEC/EN61000-4-5 ±2KV(2Ω internal resistance)/±4KV(12Ω internal resistance)	30	--	--	dB

Devise Standard

FS-A01D can ensure MORNSUN DC/DC converter module meet Surge level of IEC/EN61000-4-5 ±2KV(2Ω internal resistance)/±4KV(12Ω internal resistance).

EMC Specifications



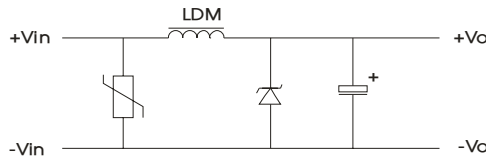
Input voltage waveform (Differential mode 2.09KV)



Output voltage waveform(17.1V)

Design Reference

1. Inside schematic



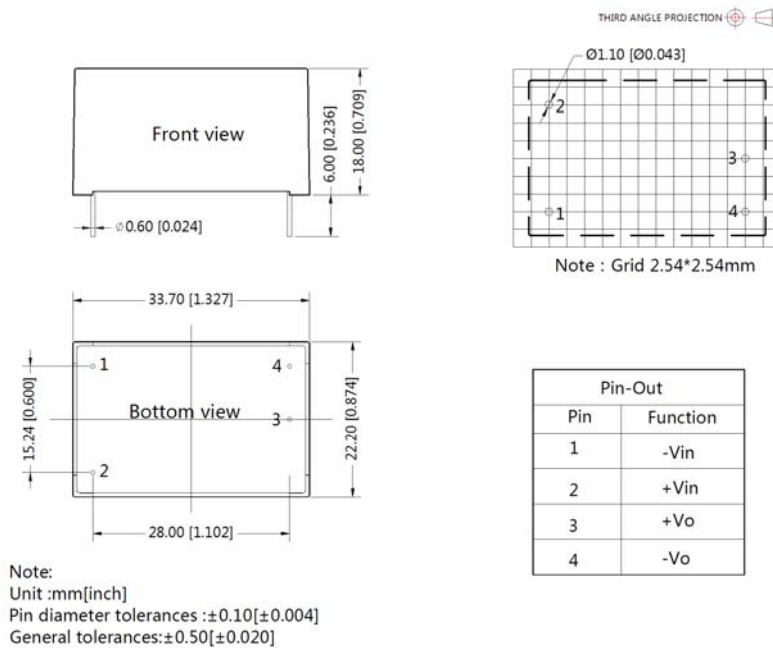
2. Typical application



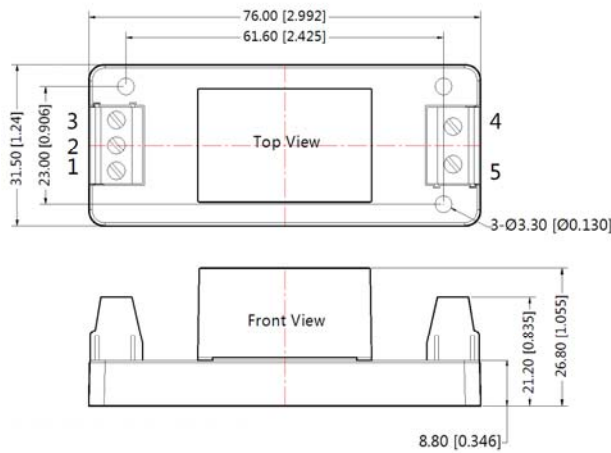
Note:1. FUSE:Due to the difference of the power module input current, the fuse of the recommended values, please refer to the Technical Manual for the power module.
2. FS-A01D:Add based on the actual apply.

3. For more information please find the application notes on www.mornsun-power.com

FS-A01D Dimensions and Recommended Layout



FS-A01DA2S Dimensions

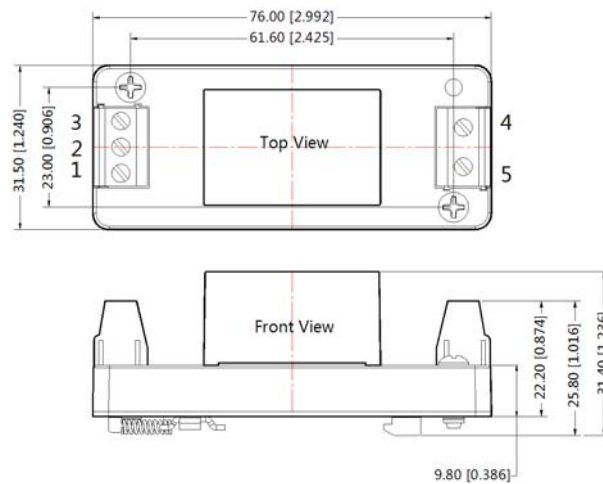


THIRD ANGLE PROJECTION

Pin-Out	
Pin	Function
1	-Vin
2	NC
3	+Vin
4	+Vo
5	-Vo

Note:
Unit:mm[inch]
Wire range:24~12 AWG
General tolerances:±0.50[±0.020]

FS-A01DA4S Dimensions



THIRD ANGLE PROJECTION

Pin-Out	
Pin	Function
1	-Vin
2	NC
3	+Vin
4	+Vo
5	-Vo

Note:
Unit:mm[inch]
Wire range:24~12 AWG
General tolerances:±0.50[±0.020]

- Note:
1. Packing Information please refer to 'Product Packing Information'. The Packing bag number of Horizontal package : 58220014, the Packing bag number of A2S/ A4S package:58220022;
 2. Unless otherwise specified, data in this data sheet should be tested under the conditions of Ta=25°C, humidity<75%;
 3. All index testing methods in this datasheet are based on our Company's corporate standards;
 4. The performance indexes of the product models listed in this manual are as above, but some indexes of non-standard model products will exceed the above-mentioned requirements, and please directly contact our technicians for specific information;
 5. We can provide product customization service;
 6. Specifications of this product are subject to changes without prior notice.

MORNSUN Guangzhou Science & Technology Co., Ltd.

Address: No. 5, Kehui St. 1, Kehui Development Center, Science Ave., Guangzhou Science City, Luogang District, Guangzhou, P. R. China
Tel: 86-20-38601850-8801 Fax: 86-20-38601272 E-mail: info@mornsun.cn